



# TIGER

## CRANES

### Model 6542 Specifications

#### Model 6542 Specifications

##### Dimensional Specifications:

- 21' Reach
- 12-21' Hydraulic boom extension
- 18.5' Lifting height
- 39" Storage height
- 161" Overall storage length
- Ø18" Mounting space required
- 6 Bolt mounting pattern
- 3/8" X 120' Winch cable
- 1450 lbs. Operating weight
- Ø27" Rotation clearance required

##### Performance Specifications:

- 40,000 ft-lb Crane rating
- 43,200 ft-lb Maximum crane lifting moment
- 6,500 lb Double line lift capacity
- 11 Second boom elevation time
- 16 Second boom extension time
- 1.3 RPM Rotation speed
- 70 FPM No load single line speed
- 400 Degrees of rotation
- -15 Degrees to +73 degrees boom angle

##### Standard Features:

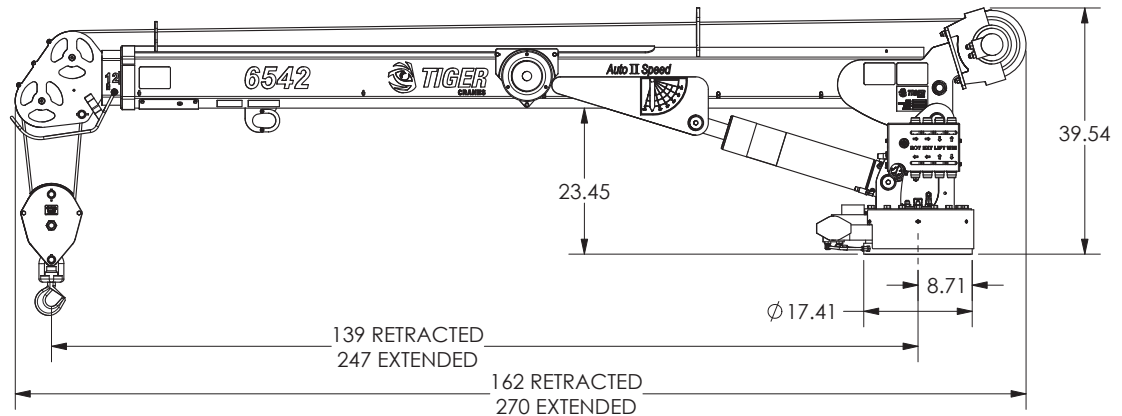
- 2-way wireless pistol grip control, including 4 hydraulic functions with proportional control
- Load percentage indication with 4 character display on remote
- 33' tether cable included for operation without batteries or in areas where radio transmission is not allowed
- Low profile anti-two-block protection
- Overload protection
- Stationary rotator gearcase
- Sealed crane turret
- Low profile jib head
- Integrated filtration with bypass condition indicator
- 12 VDC DO3 10 GPM solenoids with manual overrides & LED On/Off indicator DIN connectors
- Boom mounted hydraulic planetary winch for easier stowing
- Hydraulic cylinders equipped with counterbalance safety valves
- PPG Delfleet polyurethane paint
- Designed to meet the requirements of ANSI/ASME B30.5 (2014) and OSHA 1910.180.

##### Optional Features:

- Self-leveling LED boom tip lights controlled by remote

##### Minimum Requirements:

- 14,500 lbs. GVW rating
- 60" Cab to axle
- 300,000 in-lb frame RBM
- 8 GPM @ 2875 PSI – open center hydraulics
- 40,000 ft-lb rated crane tower reinforcement and outrigger

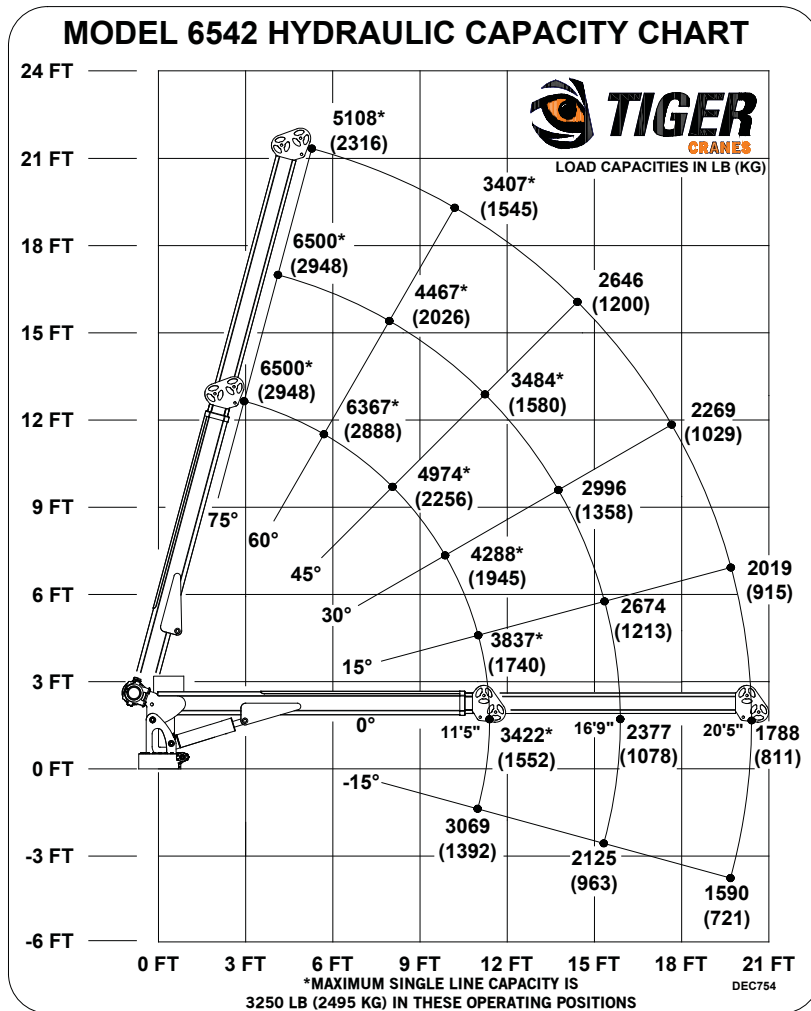




# TIGER

## CRANES

### Model 6542 Specifications



#### Bolt Hole Pattern

