



# ***TIGER***

**CRANES**

**TIGER STRONG.  
UNLEASH THE POWER.**



[tigercranes.com](http://tigercranes.com) • 800.225.8789 • [sales@servicetrucks.com](mailto:sales@servicetrucks.com)



# WHY TIGER CRANES ARE BETTER

At Tiger Cranes, our #1 priority is to build cranes with industry leading performance — not just on paper, but out in the real world, every time and everywhere. Each Tiger Crane is designed and thoroughly tested to provide full rated lifting capacity with a full cable drum and at a usable reach. Tiger Cranes' hydraulic lift and extension cylinders are sized not only to hold full loads, but to boom them as well. Tiger Cranes have been time proven reliable from the coal mines of China and the tar sands of northern Canada, to the jungles of South America. Experience Tiger Strong — Unleash the Power.

**All Tiger Cranes provide an extensive list of standard features including:**

## **All Models**

- Powder coated finish
- Slew ring bearing rotation assemblies
- Boom-mounted winches for constant jib to block length and easier cable stowing
- Sealed turrets to eliminate water entry into the crane tower – no drip pans
- Sealed electrical connections
- Low profile jib head – no flip sheave necessary
- Extended boom length labeled on booms
- Planetary winches for fast line speed and lifting efficiency
- Greater than 2,000 lbs meet ANSI/ASME B30.5 (2018) and OSHA 1910.180

## **Electric Hydraulic Cranes**

- 400° rotation with reduction drive system
- Quick release load block hook
- Wireless remote for functionality and freedom
- Independent 12 VDC winch and hydraulic motors for increased duty cycle

## **Hydraulic Cranes**

- Wireless four-function proportional controls with digital crane load display
- Remote engine start/stop, idle, and option control
- Quick release load block hook
- 400° rotation with double reduction drive system
- Auto II speed control – automatically reduces maximum speed with load but retains full proportional resolution for unparalleled load control
- Sequenced extension cylinders (29 ft+) – booms will always extend and retract in the same sequence and speed for consistent operation and length determination
- Notification horn
- Boom tip light

# PRODUCT CATALOG

## CONTENTS

MODEL	DESCRIPTION	PAGE
<b>Electric</b>	<b>Model Line Up</b>	<b>4</b>
<b>Hydraulic</b>	<b>Model Line Up</b>	<b>5</b>
<b>2060/85</b>	2,000 lbs capacity, electric	6
<b>2081E</b>	2,000 lbs capacity, electric	8
<b>3216E</b>	3,200 lbs capacity, electric	10
<b>4016E</b>	4,000 lbs capacity, electric	12
<b>5032E</b>	5,000 lbs capacity, electric	14
<b>6542E</b>	6,500 lbs capacity, electric	16
<b>5032</b>	5,000 lbs capacity, hydraulic	18
<b>6542</b>	6,500 lbs capacity, hydraulic	20
<b>6543</b>	6,500 lbs capacity, hydraulic	22
<b>8652</b>	8,600 lbs capacity, hydraulic	24
<b>8653</b>	8,600 lbs capacity, hydraulic	26
<b>1061</b>	11,000 lbs capacity, hydraulic	28
<b>1069</b>	11,000 lbs capacity, hydraulic	30
<b>1593</b>	14,800 lbs capacity, hydraulic	32
	<b>Outriggers</b>	<b>34</b>
	<b>Accessories</b>	<b>37</b>
	<b>Applications</b>	<b>38</b>

# MODEL LINE UP

## ELECTRIC HYDRAULIC CRANES

Models	2060 / 2085	2081E	3216 E/EP	4016 E/EP	5032 E/EP	6542 E/EP
Lift Capacity	2,000 lb	2,000 lb	3,200 lb	4,000 lb	5,000 lb	6,500 lb
Reach	5 ft / 10.5 ft	11 ft	16.5 ft	16.5 ft	21 ft	21 ft
Ft-Lb Rating	6,000 / 8,500	8,500	12,500	18,500	30,000	40,000
Extension (Hyd or Man)	M	M	H / M	H / M	H	H
Degree of Rotation	Continuous	400	400	400	400	400
Proportional Control	No	No	No/Yes	No/Yes	No/Yes	No/Yes
Operating Weight	280 lb / 350 lb	425 lb	750 lb	750 lb	1,445 lb	1,500 lb
Recommended Outrigger	11,000 ft-lb	11,000 ft-lb	20,000 ft-lb	20,000 ft-lb	30,000 ft-lb	43,000 ft-lb

## ELECTRIC CRANE HIGHLIGHTS:

- 2k - 6.5k capacity
- Larger working envelope than legacy models and others
- Reduced main section boom length to fit well on 60ca crane bodies
- Internal extend cylinder
- Low-profile boom tip and upgraded anti-two block
- On-board diagnostics and horn
- Wireless handheld remote
- Available with proportional control (EP) drive system

# MODEL LINE UP

## FULL HYDRAULIC CRANES

Models	5032	6542	6543	8652	8653	1061	1069	1593
Lift Capacity	5,000 lb	6,500 lb	6,500 lb	8,600 lb	8,600 lb	11,000 lb	11,000 lb	14,800 lb
Reach	21 ft	21 ft	30.5 ft	21.5 ft	30.5 ft	21 ft	29 ft	30.5 ft
Ft-Lb Rating	30,000	40,000	43,000	53,000	50,000	66,000	75,000	90,000
Extension (Hyd or Man)	H	H	H	H	H	H	H	H
Degree of Rotation	400	400	400	400	400	400	400	400
Proportional Control	Yes	Yes	Yes	Yes	Yes	Yes	Yes	Yes
Operating Weight	1,420 lb	1,450 lb	1,920 lb	1,650 lb	1,950 lb	2,070 lb	2,725 lb	3,000 lb
Recommended Outrigger	30,000 ft-lb	43,000 ft-lb	43,000 ft-lb	53,000 ft-lb	53,000 ft-lb	90,000 ft-lb	90,000 ft-lb	90,000 ft-lb
Hydraulic Requirements	8 gpm@ 2875 psi	8 gpm@ 2875 psi	8 gpm@ 2715 psi	8 gpm@ 2765 psi	8 gpm@ 2765 psi	10 gpm@ 2775 psi	10 gpm@ 3000 psi	8 gpm@ 2765 psi

## HYDRAULIC CRANE HIGHLIGHTS:

- 5k - 15k capacity
- Larger working envelope than legacy models and others
- Two-section and three-section booms with horizontal reach to 30.5 feet
- Internal extend cylinder
- Low-profile boom tip and upgraded anti-two block
- On-board diagnostics and horn
- Wireless handheld remote
- Robust yet lightweight

# 2060/85

**2,000** lbs capacity



## 2060 SPECIFICATIONS

- 2,000 lb lift capacity
- 5 ft of manual reach
- 6,000 ft-lb crane rating
- 6 ft lifting height
- 3-4-5 ft manual boom extension
- 0-21-45 boom elevation
- 23.5 FPM winch speed
- 280 lbs operating weight
- 12" x 12" mounting space required
- 57" storage height
- 47" storage length, 20" with boom folded
- 8,500 lb min chassis GVW required

## 2085 SPECIFICATIONS

- 2,000 lb lift capacity
- 10.5 ft of manual reach
- 8,500 ft-lb crane rating
- 7 ft lifting height
- 6-7.5-9-10.5 ft manual boom extension
- 0-21-45 boom elevation
- 23.5 FPM winch speed
- 33 ft remote control
- 350 lbs operating weight
- 12" x 12" mounting space required
- 33" storage height
- 81" storage length
- 8,500 lb min chassis GVW required



Standard detachable 12 ft corded remote.

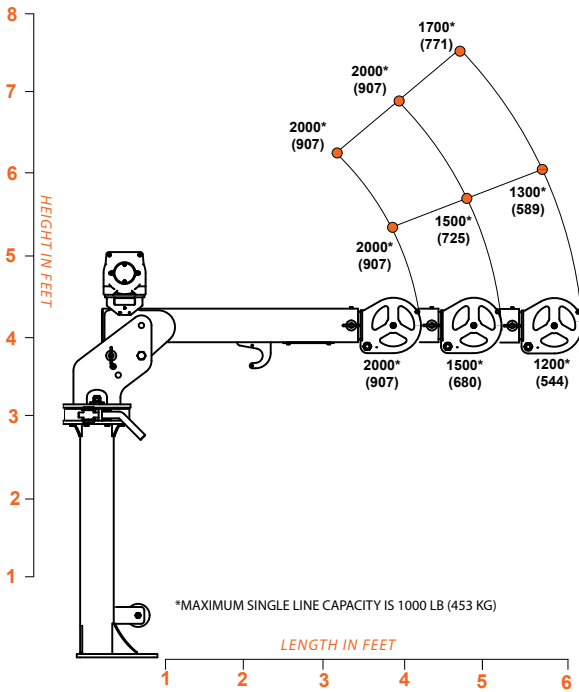


Slew bearing for easy rotation and manual band brake with continuous rotation.

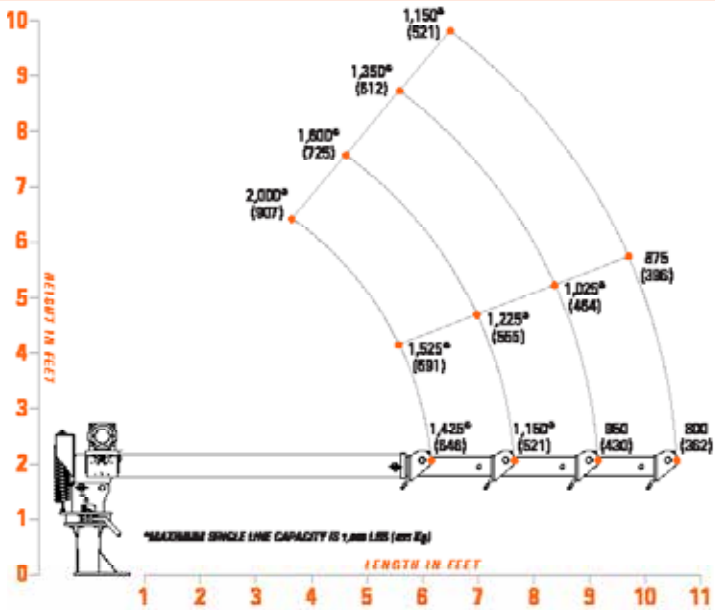


The 2060 can be folded down to save storage space in the truck bed.

## 2060 LOAD CAPACITIES



## 2085 LOAD CAPACITIES





## STANDARD FEATURES

- 2,000 lb lift capacity
- 11 ft of manual reach
- 3 hydraulic functions
- 12V DC winch
- Wireless remote

## SPECIFICATIONS

- 8,500 ft-lb crane rating
- 8,900 ft-lb max moment rating
- 11' ft lifting height
- 6.5-8-9.5-11 ft manual boom extension
- 23.5 FPM winch speed
- 3/16" x 40 ft cable
- 425 lbs operating weight
- 11" Ø mounting space required
- 26" storage height
- 91" storage length
- 10,200 lb min chassis GVW required
- -15° boom angle

## OPTIONS

- Tall base
- 25 ft tethered remote control
- Anti-two-block



Standard ergonomic wireless hand-held controls.



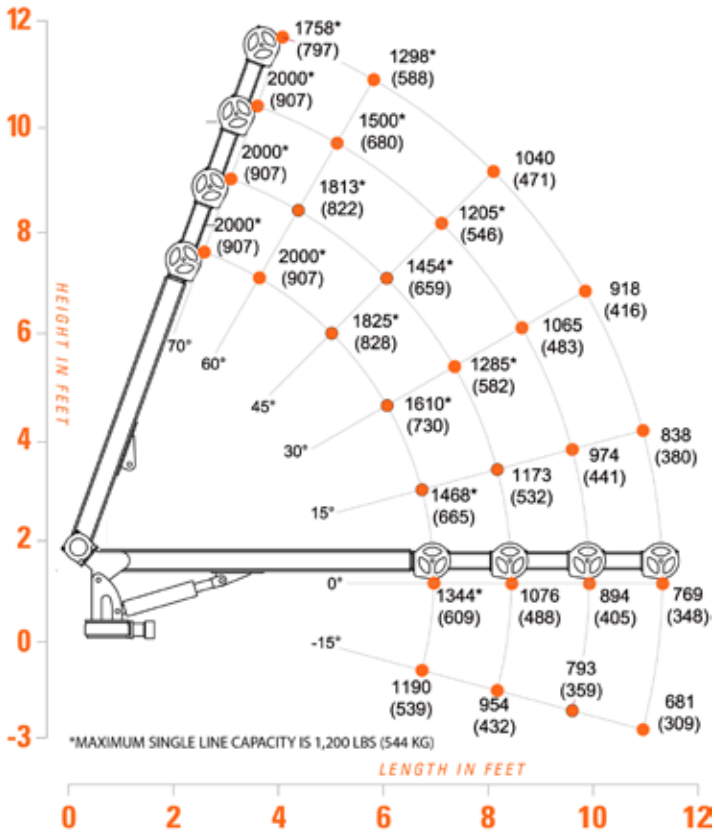
Optional remote with 25' tethered cord (no wireless functionality).



Optional 30" tall base.



## 2081E LOAD CAPACITIES



The 2081E power rotation and elevation allows you to easily position and handle loads with built-in anti-bounce technology. The 2081E is designed around SRW chassis cab installations, bringing high value to an economical package.

# 3216E

**3,200** *lbs capacity*



## STANDARD FEATURES

- 3,200 lb lift capacity
- 16.5 ft of hydraulic/manual reach
- 3 hydraulic functions
- 12V DC winch
- Wireless remote

## SPECIFICATIONS

- 12,500 ft-lb crane rating
- 13,800 ft-lb max moment rating
- 15 ft lifting height
- 7.8' to 11.8' hydraulic extension, 11.8' to 16.5' manual extension
- 22 FPM winch speed
- 1/4" x 80 ft cable
- 400° rotation with sealed turret
- 750 lbs operating weight
- 14" Ø mounting space required
- 32" storage height
- 108" storage length
- 11k min chassis GVW required
- -10° degree boom angle

## OPTIONS

- Proportional control (EP)
- Corded remote
- Remote charging pad
- LED boom tip light



Standard wireless remote provides additional functionality and freedom of operator movement.

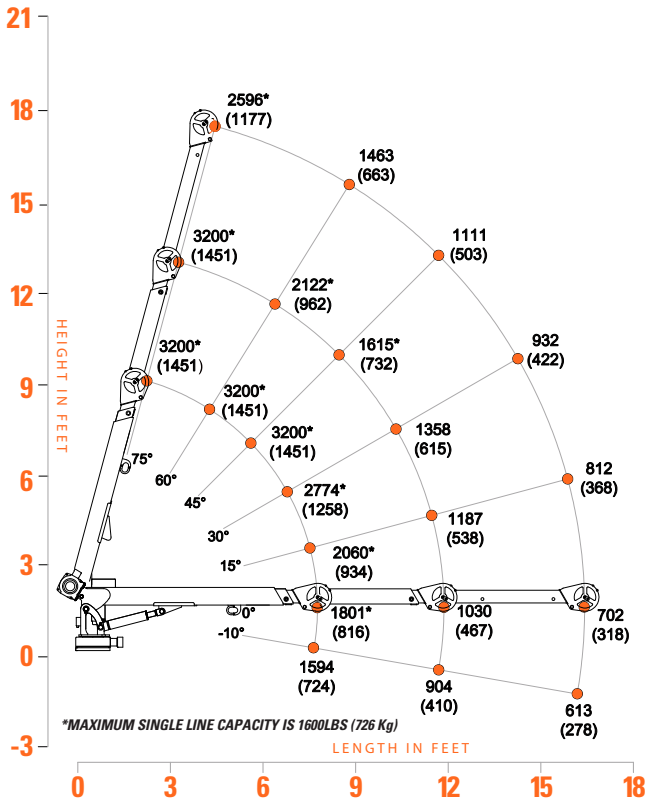


Optional remote with 25' tethered cord (no wireless functionality).



Hydraulic and manual boom extension with standard A2B.

## 3216E LOAD CAPACITIES



The 3216E Tiger Crane features include 3,200 lbs of capacity, standard wireless remote with horn, anti-two-block, four power functions plus manual jib, independent 12 V DC winch and hydraulic motors for increased duty cycle, and sealed turret. The 3216E has a compact storage size making it an ideal choice for 9 ft bodies and its light operating weight offers more payload.

# 4016E

**4,000** lbs capacity



## STANDARD FEATURES

- 4,000 lb lift capacity
- 16.5 ft of manual
- 3 hydraulic functions
- 12V DC winch
- Wireless remote

## OPTIONS

- Proportional control (EP)
- Corded remote
- Remote charging pad
- LED boom tip light

## SPECIFICATIONS

- 18,500 ft-lb crane rating
- 20,300 ft-lb max moment rating
- 15 ft lifting height
- 7.8' to 11.8' hydraulic extension, 11.8' to 16.5' manual extension
- 22 FPM winch speed
- 1/4" x 80 ft cable
- 400° rotation with sealed turret
- 750 lbs operating weight
- 14" Ø mounting space required
- 32" storage height
- 108" storage length
- 11k min chassis GVW required
- -10° boom angle



Standard wireless remote provides additional functionality and freedom of operator movement.

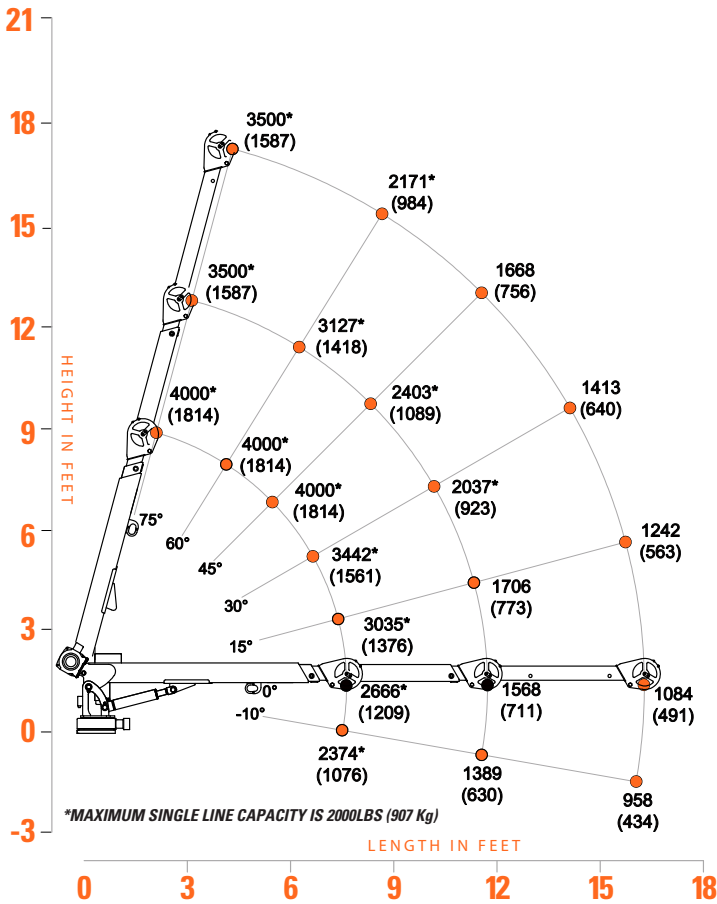


Optional remote with 25' tethered cord (no wireless functionality).



Hydraulic and manual boom extension with standard A2B.

## 4016E LOAD CAPACITIES



The 4016E Tiger Crane offers class-leading capacity and strength in a compact package. Features include 4,000 lbs of lifting capacity, standard wireless remote with horn, anti-two-block, four power functions plus manual jib, independent 12 V DC winch and hydraulic motors for increased duty cycle, and sealed turret. The 4016E has a compact storage size making it an ideal choice for 9 ft bodies, and its light operating weight offers more payload.



### STANDARD FEATURES

- 5,000 lb lift capacity
- 21 ft of hydraulic reach
- Hex boom with low profile A2B
- 3 hydraulic functions
- 12V DC winch
- Wireless remote

### OPTIONS

- Proportional control (EP)
- LED boom tip light
- 25-ft corded remote

### SPECIFICATIONS

- 30,000 ft-lb crane rating
- 32,975 ft-lb max moment rating
- 18.5 ft lifting height
- 12 ft to 21 ft reach with one hydraulic boom extension
- 36 FPM winch speed
- 5/16" x 120 ft cable
- 400° rotation with sealed turret
- 1445 lbs operating weight
- 29" Ø mounting space required
- 38" storage height
- 160" storage length
- 14,500 lb min chassis GVW required
- -15° boom angle



Standard wireless handheld remote with diagnostics.

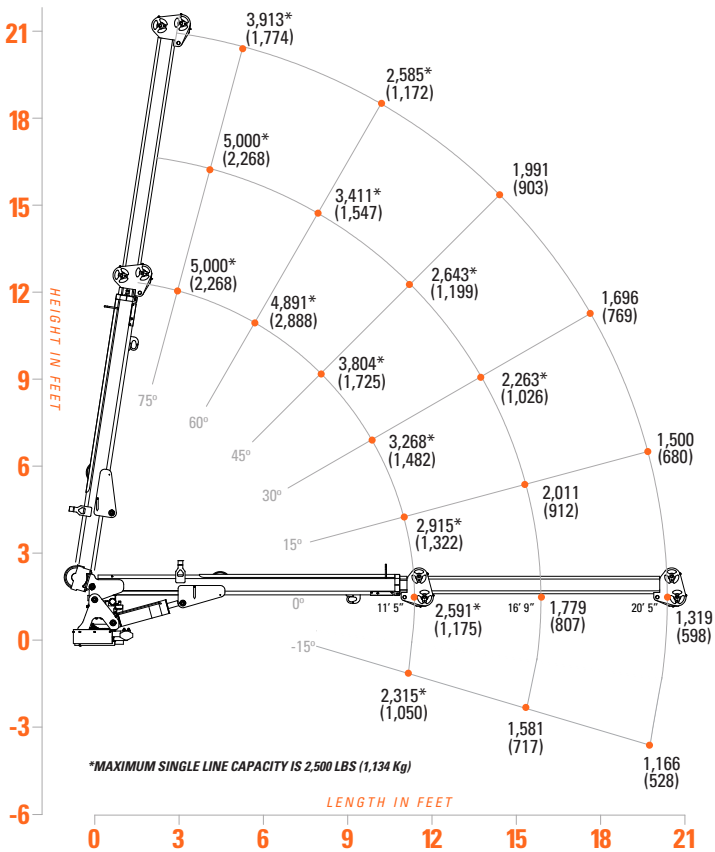


Optional remote with 25' tethered cord (no wireless functionality).



Optional wireless proportional crane and chassis control with digital crane load display.

## 5032E LOAD CAPACITIES



The 5032E is the smallest model built with the hex boom design. Featuring 21-ft of full hydraulic reach with self-aligning hex booms, independent 12 V DC pump motor and winch for increased duty cycle, and anti-bounce technology these electric cranes offer all the big crane features in a weight-saving package.



## STANDARD FEATURES

- 6,500 lb lift capacity
- 21 ft of hydraulic reach
- Hex boom with low profile jib head
- 3 hydraulic controls
- 12V DC winch
- Wireless remote

## OPTIONS

- Proportional control (EP)
- LED boom tip light
- 25-ft corded remote

## SPECIFICATIONS

- 40,000 ft-lb crane rating
- 43,200 ft-lb max moment rating
- 18.5 ft lifting height
- 12 ft to 21 ft reach with one hydraulic boom extension
- 36 FPM winch speed
- 3/8" x 120 ft cable
- 400° rotation with sealed turret
- 1500 lbs operating weight
- 29" Ø mounting space required
- 38.25" storage height
- 160" storage length
- 14,500 lb min chassis GVW required
- -15° boom angle



Standard wireless handheld remote with diagnostics.



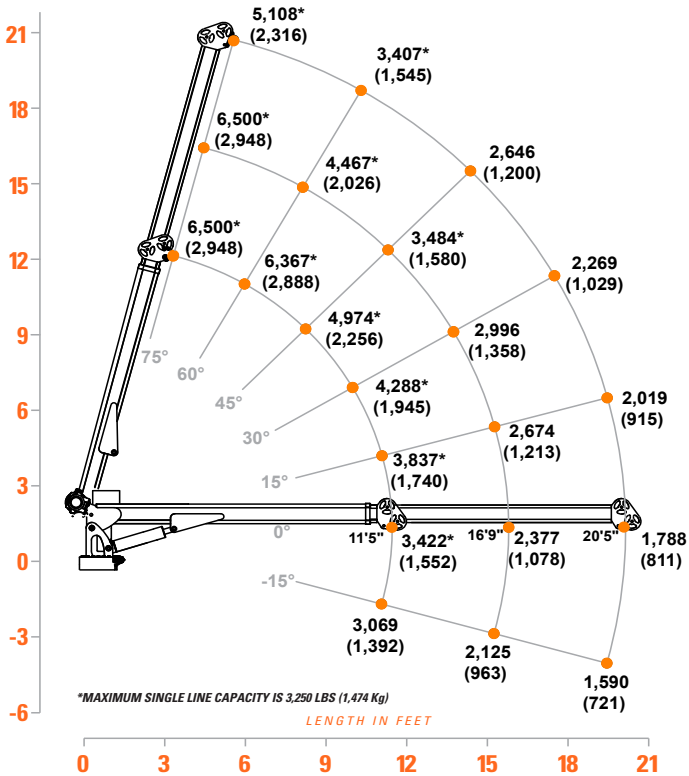
Optional remote with 25' tethered cord (no wireless functionality).



Optional wireless proportional crane and chassis control with digital crane load display.



## 6542E LOAD CAPACITIES



The 6542E is the largest electric model available from Tiger Cranes. With industry-leading capacity, these cranes will lift your heavy work without a PTO and pump. The 6542E features 21 ft of full hydraulic reach with self-aligning hex booms, independent 12 V DC pump motor and winch motors for increased duty cycle, and anti-bounce technology.



### STANDARD FEATURES

- 5,000 lb lift capacity
- 21 ft of hydraulic reach
- 4 hydraulic functions
- Hex boom with low profile jib head
- Boom-mounted planetary winch
- Wireless proportional control with digital crane load display
- Auto II speed control

### OPTIONS

- LED boom tip light

### SPECIFICATIONS

- 30,000 ft-lb crane rating
- 32,975 ft-lb max moment rating
- 18.5 ft lifting height
- 12 ft to 21 ft reach with one hydraulic boom extension
- 70 FPM winch speed
- 5/16" x 120 ft cable
- 400° rotation with sealed turret
- 1380 lbs operating weight
- 18" Ø mounting space required
- 36" storage height
- 159" storage length
- 14,500 lb min chassis GVW required
- 8 GPM @ 2875 PSI – open center hydraulic required
- 33 ft remote tether cord
- -15° boom angle



Standard wireless proportional crane and chassis control with digital crane load display.

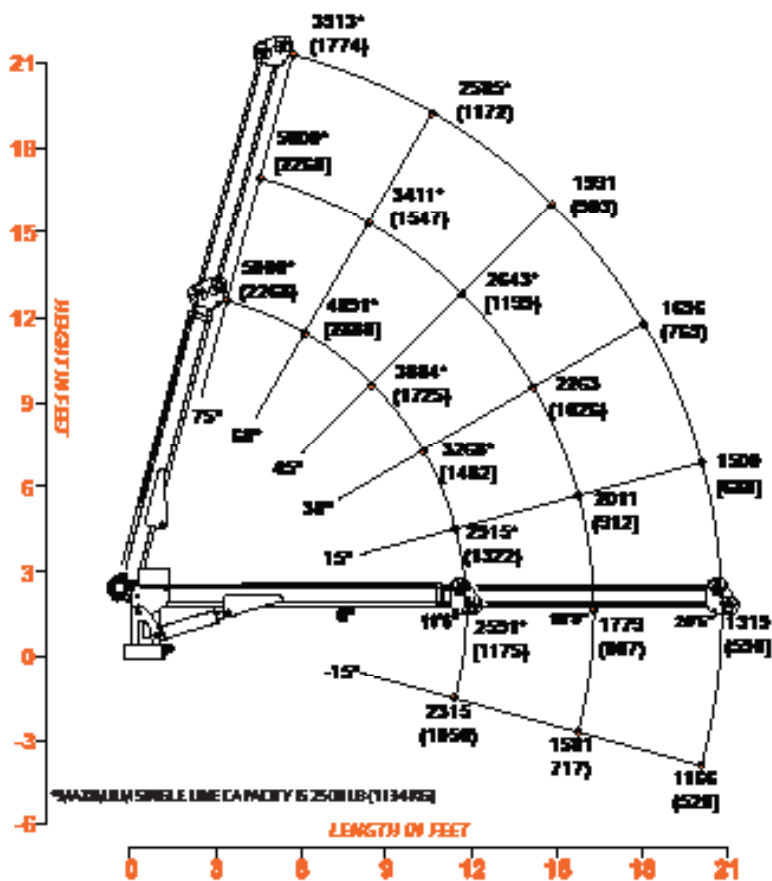


Planetary winch provides the speed and power necessary for quick lifts and stowing.



Sealed center rotation eliminates the need for a drip pan in the crane tower.

## 5032 LOAD CAPACITIES



The 5032 is the smallest of the hydraulic cranes available from Tiger Cranes. Featuring self-aligning hex boom design, all hydraulic extension, Auto II Speed, and a strong 30,000 ft-lb rating, the 5032 is a full feature hydraulic crane in a weight saving package.

# 6542

**6,500** lbs capacity



## STANDARD FEATURES

- 6,500 lb lift capacity
- 21 ft of hydraulic reach
- 4 hydraulic functions
- Hex boom with low profile jib head
- Boom-mounted planetary winch
- Wireless proportional control with digital crane load display
- Auto II speed control

## OPTIONS

- LED boom tip light

## SPECIFICATIONS

- 40,000 ft-lb crane rating
- 43,200 ft-lb max moment rating
- 18.5 ft lifting height
- 12 ft to 21 ft reach with one hydraulic boom extension
- 70 FPM winch speed
- 3/8" x 120 ft cable
- 400° rotation with sealed turret
- 1450 lbs operating weight
- 18" Ø mounting space required
- 37" storage height
- 159" storage length
- 14,500 lb min chassis GVW required
- 8 GPM @ 2875 PSI – open center hydraulic required
- 33 ft remote tether cord
- -15° boom angle



Standard wireless proportional crane and chassis control with digital crane load display.

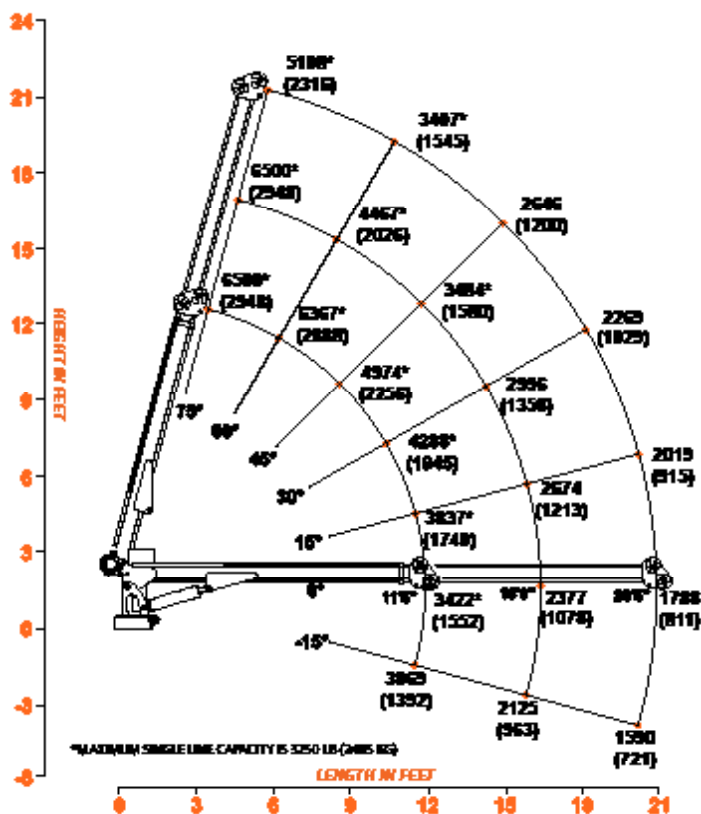


Auto II Speed automatically reduces the maximum working speed of all crane functions when a load is sensed.



33 ft tether cord (included) allows RF-free operation or alternate power.

## 6542 LOAD CAPACITIES



The 6542 is Tiger Crane model meets the demand of many applications. Boasting a very strong 40,000 ft-lb rating and 6,500 lbs lift capacity, the 6542 is the crane for your medium duty service truck.

# 6543

**6,500** lbs capacity



## STANDARD FEATURES

- 6,500 lb lift capacity
- 30.5 ft of hydraulic reach
- 4 hydraulic functions
- Hex boom with low profile jib head
- Boom-mounted planetary winch
- Wireless proportional control with digital crane load display
- Auto II speed control

## OPTIONS

- LED boom tip light

## SPECIFICATIONS

- 43,000 ft-lb crane rating
- 47,850 ft-lb max moment rating
- 29 ft lifting height
- 12 ft to 30.5 ft reach with one hydraulic boom extension
- 68 FPM winch speed
- 3/8" x 120 ft cable
- 400° rotation with sealed turret
- 1920 lbs operating weight
- 18" Ø mounting space required
- 45" storage height
- 172" storage length
- 19,500 lb min chassis GVW required
- 8 GPM @ 2715 PSI – open center hydraulic required
- 33 ft remote tether cord
- -12.5° boom angle



Standard wireless proportional crane and chassis control with digital crane load display.

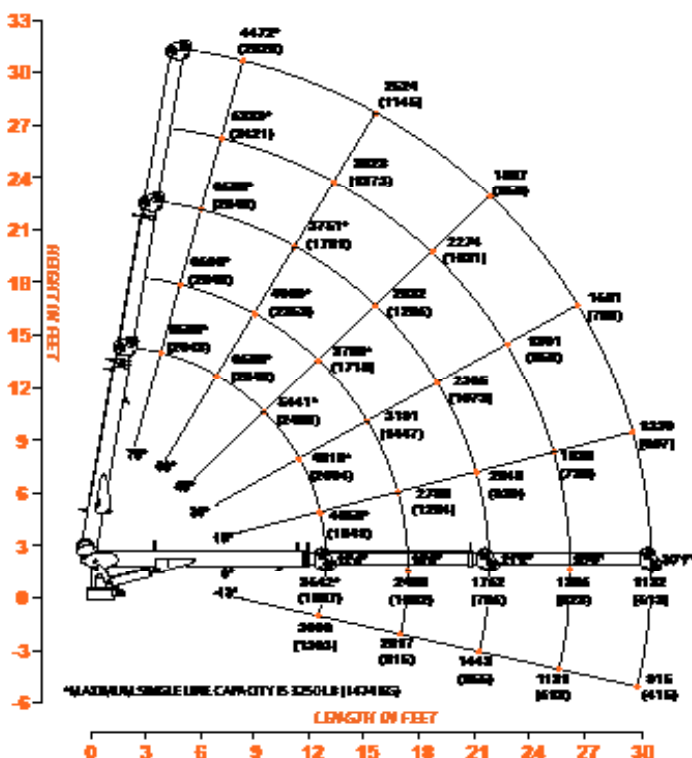


Auto II Speed automatically reduces the maximum working speed of all crane functions when a load is sensed.



33 ft tether cord (included) allows RF-free operation or alternate power.

## 6543 LOAD CAPACITIES



The 6543 Tiger Crane model has a three-section boom which allows operators to reach out to 30.5 feet horizontally. With a 43,000 ft-lb rating and 6,500 lbs lift capacity, the 6543 is a great choice for medium duty service trucks that need extra reach.

# 8652

**8,600** lbs capacity



## STANDARD FEATURES

- 8,600 lb lift capacity
- 21.5 ft of hydraulic reach
- 4 hydraulic functions
- Hex boom with low profile jib head
- Boom mounted planetary winch
- Wireless proportional control with digital crane load display
- Auto II speed control

## OPTIONS

- LED boom tip light

## SPECIFICATIONS

- 53,000 ft-lb crane rating
- 57,950 ft-lb max moment rating
- 23 ft lifting height
- 12 ft to 21.5 ft reach with one hydraulic boom extension
- 68 FPM winch speed
- 3/8" x 120 ft cable
- 400° rotation with sealed turret
- 1,650 lbs operating weight
- 18" Ø mounting space required
- 45" storage height
- 172" storage length
- 19,500 lb min chassis GVW required
- 8 GPM @ 2,675 PSI open center hydraulic required
- 33 ft remote tether cord
- -12.5° boom angle



Standard wireless proportional crane and chassis control with digital crane load display.



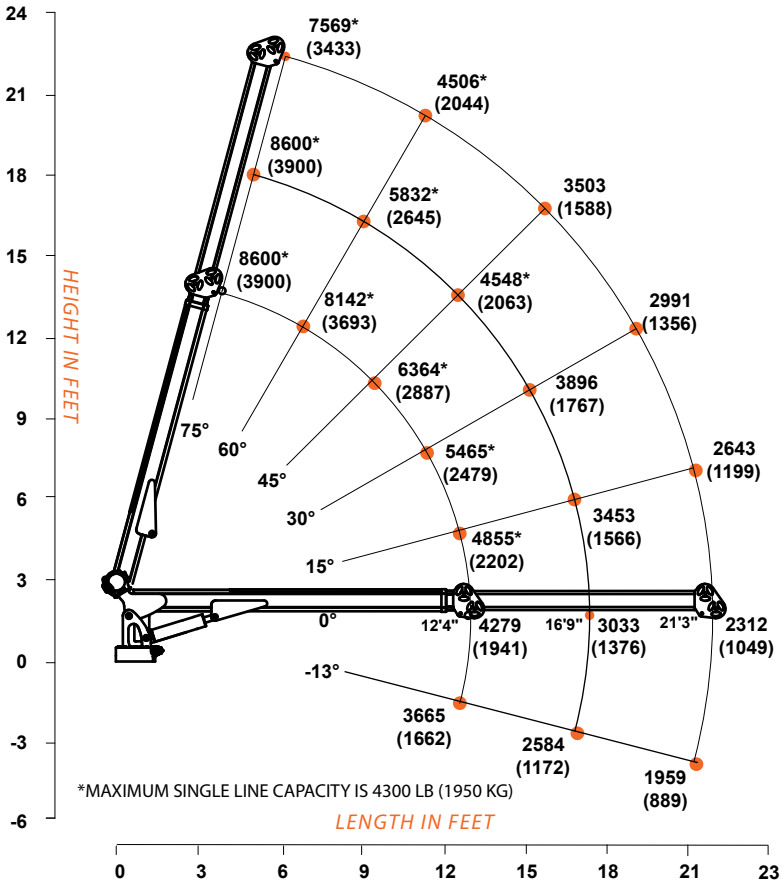
D03 Valve system provides reliable hydraulic control, indicator lights, integrated filtration, and manual overrides.



Auto II Speed automatically reduces the maximum working speed of all crane functions when a load is sensed.



## 8652 LOAD CAPACITIES



The 8652 is largest crane available to be mounted on a 19.5k GVW chassis. With 8,600 lbs of gross lifting capacity, 21.5 ft of full hydraulic reach, Auto II Speed control and high speed planetary winch, the 8652 will be your jobsite workhorse.

# 8653

**8,600** lbs capacity



## STANDARD FEATURES

- 8,600 lb lift capacity at 5.8 ft
- 30.5 ft of hydraulic reach
- 4 hydraulic functions
- Hex boom with low profile jib head
- Boom-mounted planetary winch
- Wireless proportional control with digital crane load display
- Auto II speed control

## OPTIONS

- LED boom tip light

## SPECIFICATIONS

- 50,000 ft-lb crane rating
- 54,300 ft-lb max moment rating
- 29 ft lifting height
- 12 ft to 30.5 ft reach with two hydraulic boom extensions
- 68 FPM winch speed
- 3/8" x 120 ft cable
- 400° rotation with sealed turret
- 1,950 lbs operating weight
- 18" Ø mounting space required
- 45" storage height
- 172" storage length
- 19,500 lb min chassis GVW required
- 8 GPM @ 2,765 PSI open center hydraulic required
- 33 ft remote tether cord
- -12.5° boom angle



Standard wireless proportional crane and chassis control with digital crane load display.

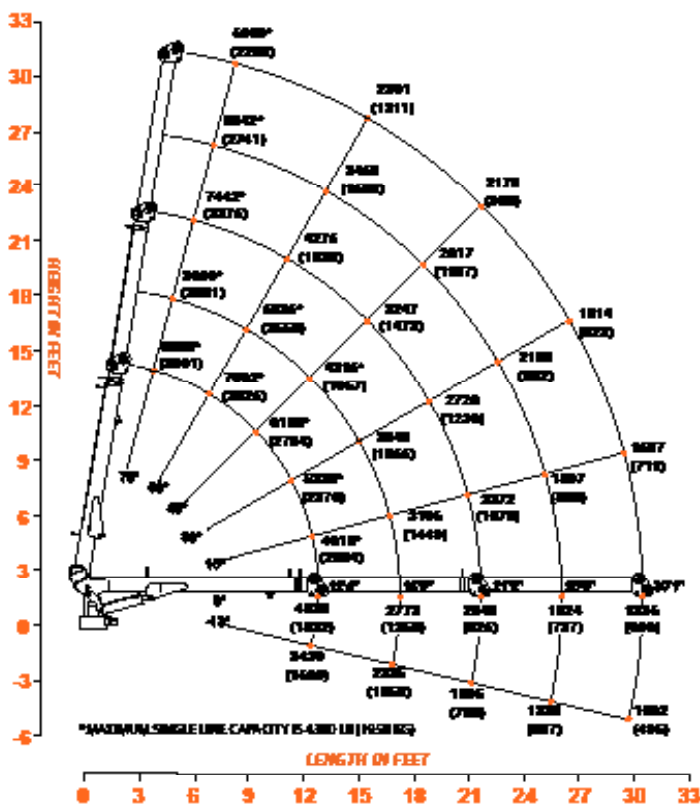


Exclusive sequenced two-stage hydraulic boom extensions provide a total of 30.5 ft of reach.



Sealed center rotation eliminates the need for a drip pan in the crane tower.

## 8653 LOAD CAPACITIES



The 8653 is the perfect fit for those who need a long reach crane on a 19.5k GVW chassis. Featuring 8,600 lbs of lifting capacity, 30.5 ft of reach, and a wireless remote with digital crane load display, the 8653 will allow you to work confidently in long reach applications.

# 1061

**11,000** lbs capacity



## STANDARD FEATURES

- 11,000 lb lift capacity
- 21 ft of hydraulic reach
- 4 hydraulic functions
- Hex boom with low profile jib head
- Boom-mounted planetary winch
- Wireless proportional control with digital crane load display
- Auto II speed control

## OPTIONS

- LED boom tip light

## SPECIFICATIONS

- 66,000 ft-lb crane rating
- 72,200 ft-lb max moment rating
- 18.5 ft lifting height
- 12 ft to 21 ft reach with one hydraulic boom extension
- 60 FPM winch speed
- 7/16" x 120 ft cable
- 400° rotation with sealed turret
- 2070 lbs operating weight
- 21" Ø mounting space required
- 42" storage height
- 158" storage length
- 25,500 lb min chassis GVW required
- 10 GPM @ 2775 PSI – open center hydraulic required
- 33 ft remote tether cord
- -6.5° boom angle



Standard wireless proportional crane and chassis control with digital crane load display.

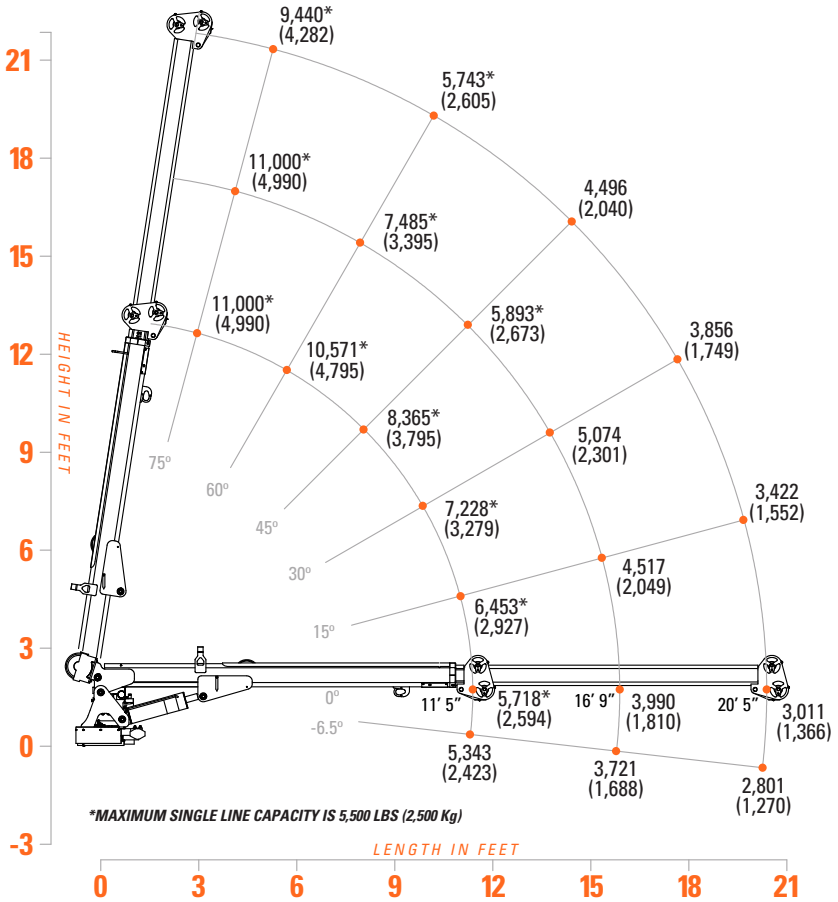


33 ft tether cord (included) allows RF-free operation or alternate power.



Auto II Speed automatically reduces the maximum working speed of all crane functions when a load is sensed.

## 1061 LOAD CAPACITIES



The 1061 Tiger Crane is the crane for the heavy lift user that needs big capacity in a compact package. Featuring 11,000 lbs of gross lift, 21 ft of power reach, and the ability to mount on an 11 ft crane body, the 1061 is the crane for heavy duty versatility.

# 1069

**11,000** lbs capacity



## STANDARD FEATURES

- 11,000 lb lift capacity
- 29 ft of hydraulic reach
- 4 hydraulic functions
- Hex boom with low profile jib head
- Boom-mounted planetary winch
- Wireless proportional control with digital crane load display
- Auto II speed control

## SPECIFICATIONS

- 75,000 ft-lb crane rating
- 81,500 ft-lb max moment rating
- 26.5 ft lifting height
- 12 ft to 29 ft reach with two hydraulic boom extensions
- 60 FPM winch speed
- 7/16" x 120 ft cable
- 400° rotation with sealed turret
- 2,500 lbs operating weight
- 21" Ø mounting space required
- 44" storage height
- 162" storage length
- 25,500 lb min chassis GVW required
- 10 GPM @ 3,000 PSI open center hydraulic required
- 33 ft remote tether cord
- -6.5° boom angle

## OPTIONS

- LED boom tip light



Standard wireless proportional crane and chassis control with digital crane load display.

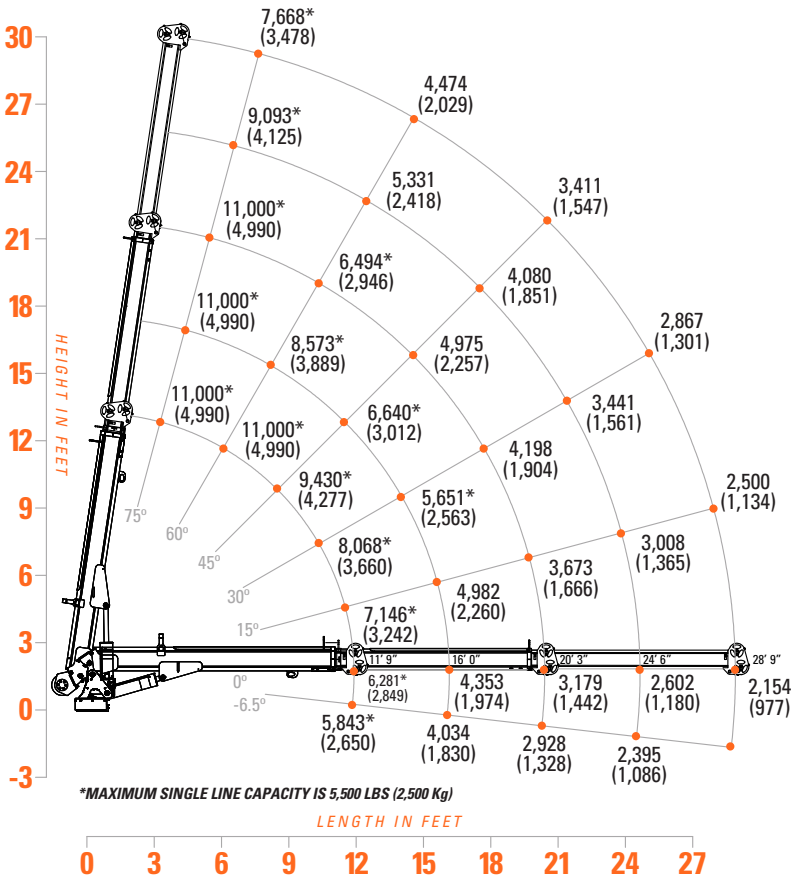


Planetary winch provides the speed and power necessary for quick lifts and stowing.



Three-stage hydraulic boom extensions provide a total of 29 ft of reach. Exclusive sequenced extension cylinders provide consistent first and second stage operation.

## 1069 LOAD CAPACITIES



The 1069 Tiger Crane features 29 ft of hydraulic reach and 11,000 lbs of lifting capacity, all in a crane that can be mounted on a 25.5k GVW or larger chassis.

# 1593

# 14,800 lbs capacity



## STANDARD FEATURES

- 14,800 lb lift capacity
- 30.5 ft of hydraulic reach
- 4 hydraulic functions
- Hex boom with low profile jib head
- Boom-mounted planetary winch
- Wireless proportional control with digital crane load display
- Auto II speed control

## OPTIONS

- LED boom tip light

## SPECIFICATIONS

- 90,000 ft-lb crane rating
- 97,700 ft-lb max moment rating
- 31 ft lifting height
- 12 ft to 30.5 ft reach with two hydraulic boom extensions
- 45 FPM winch speed
- 1/2" x 120 ft cable
- 400° rotation with sealed turret
- 3,000 lbs operating weight
- 21" Ø mounting space required
- 51" storage height
- 177" storage length
- 33,000 lb minimum GVW required
- 10 GPM @ 2765 PSI open center hydraulic required
- 33 ft remote tether cord
- -20° boom angle



Standard wireless proportional crane and chassis control with digital crane load display.



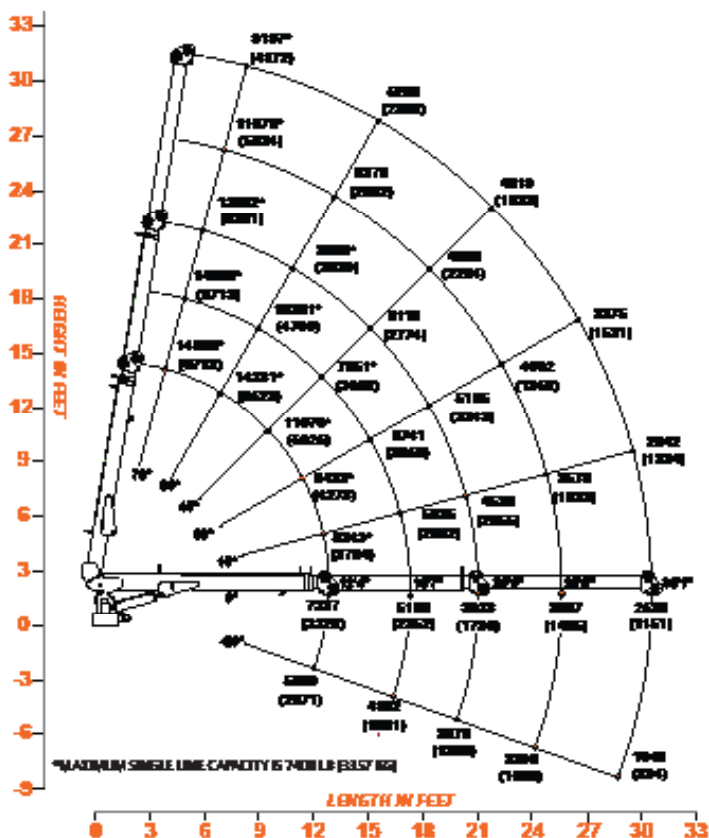
D03 Valve system provides reliable hydraulic control, indicator lights, integrated filtration, and manual overrides.



33 ft tether cord (included) allows RF-free operation or alternate power.



## 1593 LOAD CAPACITIES



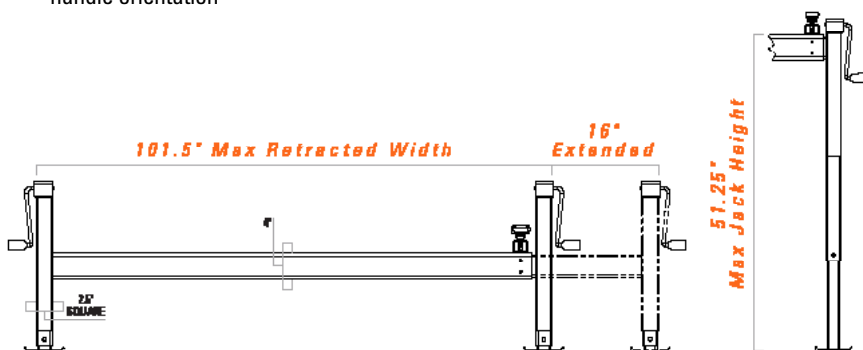
The 1593 crane is the largest Tiger Crane available. Designed for maximum loads and reach, the 1593 has 14,800 lbs of lift capacity and a 90,000 ft-lb crane rating. Whether you need big capacity or long reach, the 1593 has it all.

# OUTRIGGERS

## 11K OUTRIGGER

### SPECIFICATIONS

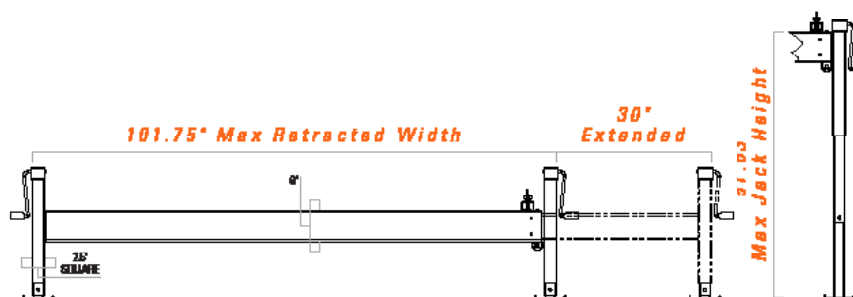
- For use with up to a 11,000 ft-lb crane
- 16" extension
- 8,000 lb sidewind jacks with drop legs
- Stationary arm tube is to be cut to length and welded to the jacks by the customer
- Outrigger can have any retracted length up to 101.5", jack height or jack handle orientation



## 20K OUTRIGGER

### SPECIFICATIONS

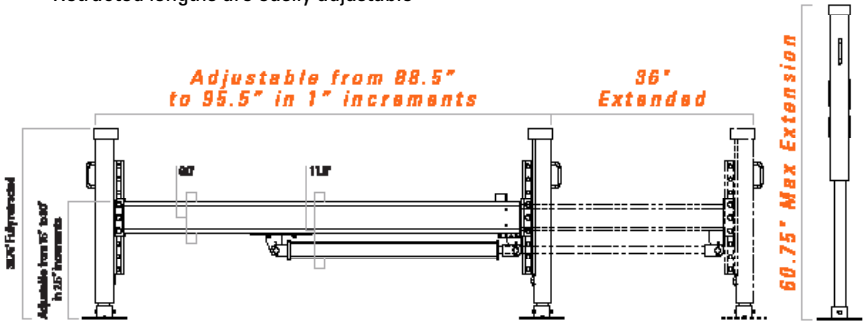
- For use with up to a 20,000 ft-lb crane
- 30" extension
- 8,000 lb sidewind jacks with drop legs
- Equipped with a roller for easy extension
- Stationary arm tube is to be cut to length and welded to the jacks by the customer
- Outrigger can have any retracted length up to 101.75", jack height or jack handle orientation



## 30K OUTRIGGER

### SPECIFICATIONS

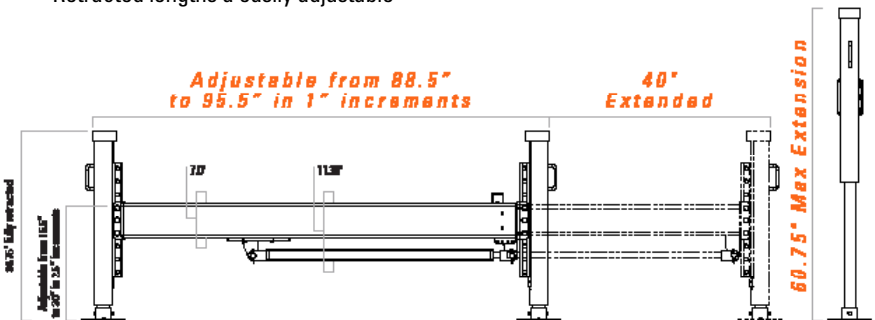
- For use with up to a 30,000 ft-lb crane
- 36" extension
- Available in hydraulic out/hydraulic down, manual out/hydraulic down, and manual out/manual down configurations
- 12,000 lb sidewind jacks with drop legs on manual down version
- Manual out version is equipped with a roller for easy extension
- Retracted lengths are easily adjustable



## 43K OUTRIGGER

### SPECIFICATIONS

- For use with up to a 43,000 ft-lb crane
- 40" extension
- Available in hydraulic out/hydraulic down, manual out/hydraulic down, and manual out/manual down configurations
- 12,000 lb sidewind jacks with drop legs on manual down version
- Manual out version is equipped with a roller for easy extension
- Retracted lengths are easily adjustable

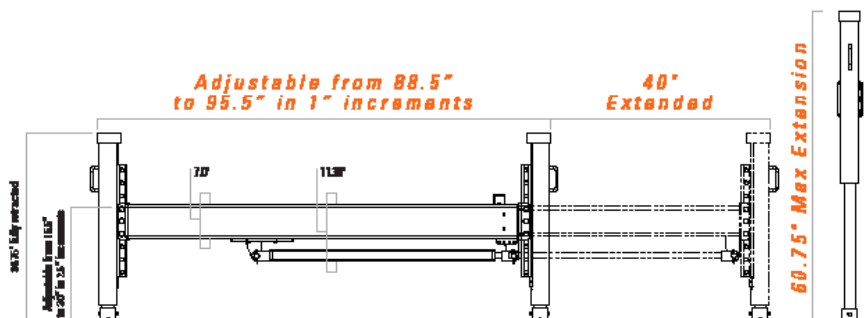


# OUTRIGGERS

## 53K OUTRIGGER

### SPECIFICATIONS

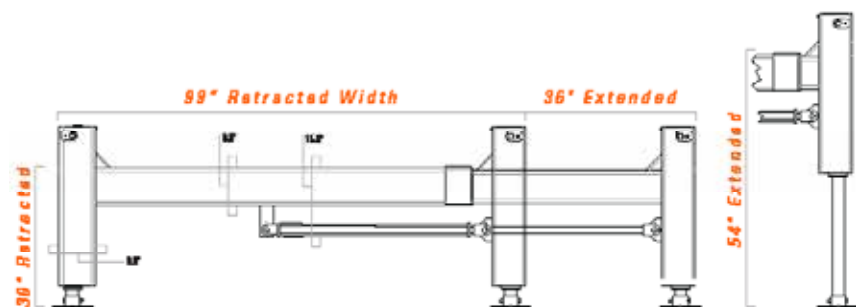
- For use with up to a 53,000 ft-lb crane
- 40" extension
- Available in hydraulic out/hydraulic down and manual out/hydraulic down configurations
- 12,000 lb sidewind jacks with drop legs on manual down version
- Manual out version is equipped with a roller for easy extension
- Retracted lengths are easily adjustable



## 90K OUTRIGGER

### SPECIFICATIONS

- For use with up to a 90,000 ft-lb crane
- 36" extension
- Hydraulic out/hydraulic down
- Internally routed hoses



# ACCESSORIES

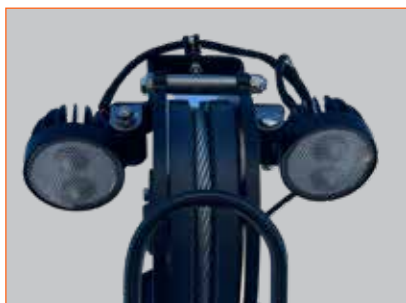
## WIRELESS CHARGING PAD

Optional charging pad for wireless handheld remote.



## BOOM TIP LIGHT

Optional self-leveling boom tip lights available on all cranes 3216E and up.



## SPRING-LOADED CRANE BOOM RESTS



Spring-loaded rectangle boom rest.



Spring-loaded hexagon boom rest.

# APPLICATIONS



# APPLICATIONS



# ABOUT TIGER CRANES

Tiger Cranes, a wholly owned division of Sioux Automation Center Inc, has been building high-performance telescoping service cranes since 1990. Focused on providing cranes that offer cutting edge features and reliability, Tiger Cranes strives to meet the needs of operators and retailers of heavy equipment used in mining, road construction, site prep and land clearing, agricultural equipment, the oil and gas industry, and local, state and federal government.

Tiger Cranes are also standard equipment on crane bodies manufactured by Service Trucks International. Based in Sioux Center, IA, Tiger Cranes markets equipment through direct, distributor, and OEM channels in the United States, Canada, Mexico, as well as in international markets.



# TIGER STRONG. UNLEASH THE POWER.



877 1st Ave NW, Sioux Center, Iowa 51250  
[tigercranes.com](http://tigercranes.com) | 800.225.8789 | [sales@tigercranes.com](mailto:sales@tigercranes.com)