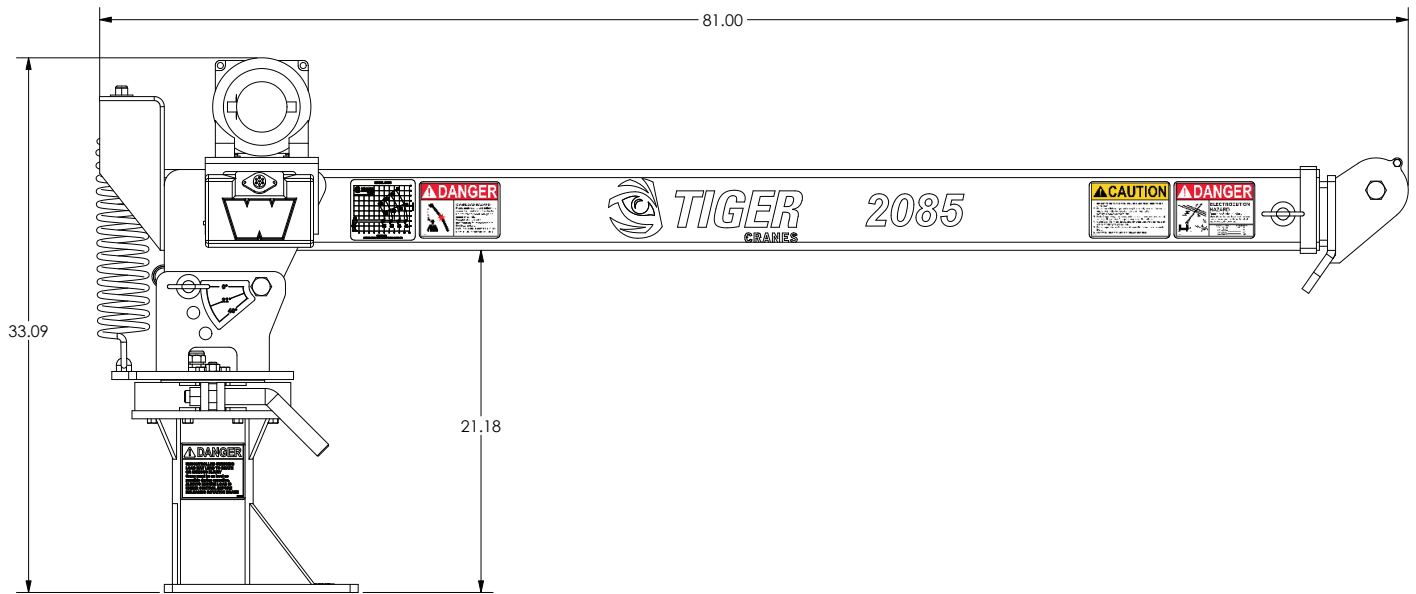




TIGER CRANES

Model 2085 Specifications

Model 2085 Specifications



Dimensional Specifications:

- 10' 6" Reach
- 6' - 7' 6" - 9' - 10' 6" Manual Boom Extension
- 7' Lifting Height (from base of crane)
- 33" Storage Height
- 81" Overall Storage Length
- 12"x12" Mounting Space Required (for base of crane)
- 4 Bolt 9"x10" Mounting Pattern
- 3/16" X 40' Hoist Cable
- 350 lbs. Operating Weight

Performance Specifications:

- 8,500 ft-lb Crane Rating
- 2,000 lb Double Line Lift Capacity
- 360 Degrees of Continuous Rotation
- Manual Band Brake
- 0-21-45 Degrees Boom Angle
- Hoist Performance:

LINE LOAD	LINE SPEED
0 lbs	27 FPM
300 lbs	25 FPM
600 lbs	23 FPM
900 lbs	21 FPM
1000 lbs	18 FPM

Standard Features:

- 12' tethered control included for operation (optional 33' cable available)
- Electric planetary winch.
- Powder coated components.

Minimum Chassis/Power Requirements

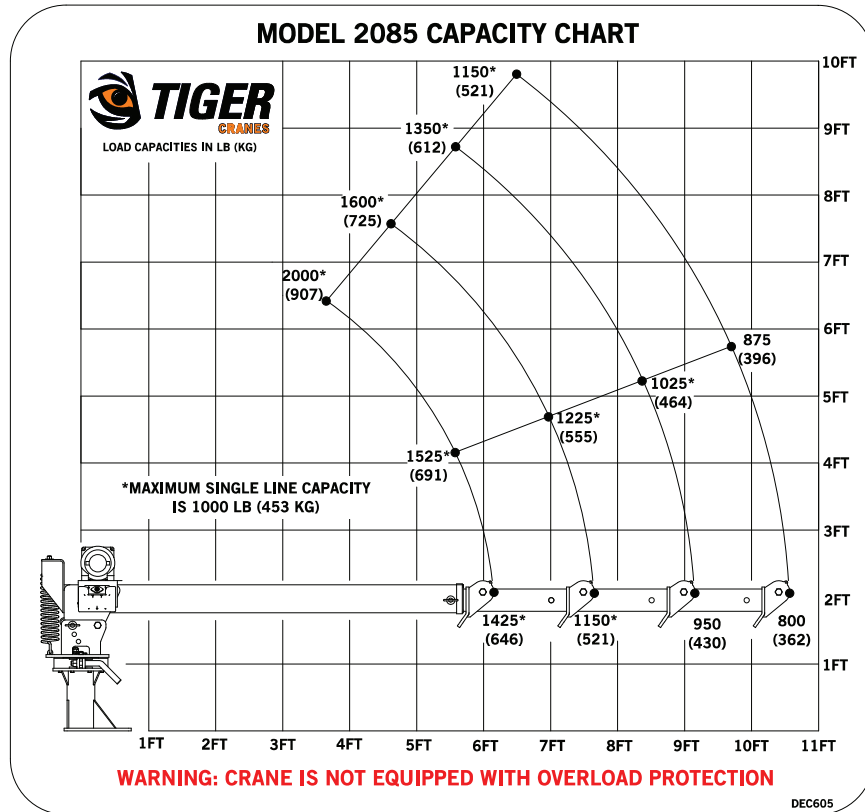
- 8,500 lbs. GVW Rating
- 60 Amp Alternator
- 85 amp/hr Battery
- 500 Cold Cranking Amp Battery



TIGER

CRANES

Model 2085 Specifications



Bolt Hole Pattern

